

biamp.

Tesira

Field Reference Guide



Table of Contents

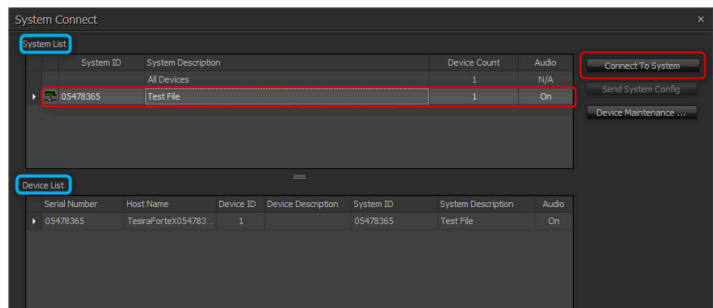
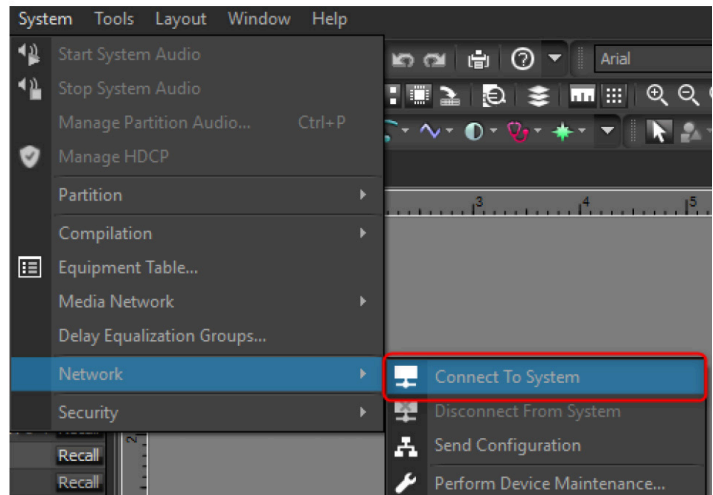
Connecting to a System	2
Navigating to Device Maintenance	2
Clearing a Configuration	3
Changing Network Settings of a Device	4
Changing Control Network IP Address / Changing or Enabling/Disabling AVB IP Address / Changing Dante IP Address	4-5
Updating Tesira Firmware	5
Checking Fault Status in Tesira	6
Pulling Logs from a Tesira System	7
Adjusting the Equipment Table	8
Compiling and Sending a Tesira File	9
Allocating Blocks to a Specific Unit	9
Starting and Stopping System/Partition Audio	9
Setting a Tesira Clock Master	10
Factory Reset (Pin-hole Reset, PHR)	10
Forte X Exclusive: Port Modes	10
Tesira Helpful Tips	11
Manual Discovery	11
Using Signal Path Identifier	11
Preventing the Compiler from Adjusting Equipment Table	11
Adding Discontinued Devices	11
Procedure for setting Static IP address in Tesira	12
Tesira Common Faults and Troubleshooting Tips	13
Fault: Port is not 802.1as Capable	13
Fault: Clocks not synchronized...	13
Fault: Unable to Communicate with Card in Slot	14
Fault: Inconsistent Device	14

CONNECTING TO A SYSTEM

To connect to a system, you will need to know the subnet in which the system lives on the network. This could be handed out by DHCP or applied statically, so you will want to make sure you note what the IP address is. Rack-mount Forte and Server/Server IO have a front panel that make it easy to identify the IP address of the network you are attempting to connect to.

Open Tesira Software and locate the **System** tab on the top toolbar. Navigate through **Network -> Connect To System**.

Once you open the **Connect To System** menu, you can select the system you would like to connect to from the **System List** and click the **Connect to System** button on the right side. The **System List** allows you to select the system, and the **Device List** displays devices that are currently part of the selected system.



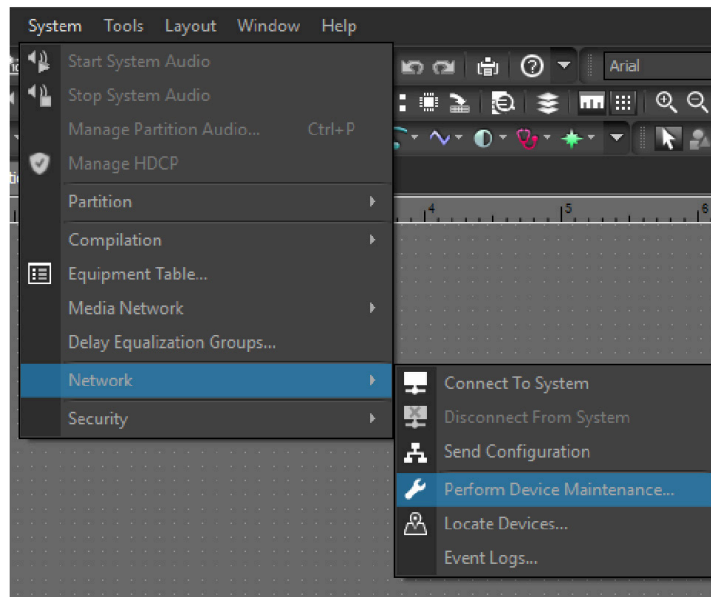
NAVIGATE TO DEVICE MAINTENANCE

You can navigate to the Device Maintenance window by going to **System -> Network -> Perform Device Maintenance**.

Once you are in **Device Maintenance**, the System List allows you to select a specific system. The Device List is where all the devices from the currently selected system will appear.

NOTES:

- When **All Devices** is the selected option in in the **System List** all available devices in the same subnet will appear in the **Device List**.
- Remote Expanders (EX-AEC, EX-OUT, etc.) and other devices (Parlé Microphones, PoE Amplifiers) are visible in a submenu of **Device Maintenance**, referred to as **Remote Device Maintenance**. You can access **Remote Device Maintenance** by clicking the **Remote Devices** button in the bottom right of the **Device Maintenance** window.



CLEARING A CONFIGURATION

Clearing a configuration from a system is easy. Navigate to **Device Maintenance** and select the system from which you would like to clear the configuration.

Once you have selected the system, locate the **Clear Configuration...** button on the right side of the window. This will clear the configuration from the currently selected system.

NOTES:

- All server class devices in that system will be cleared of their file. Make sure to save a backup copy of the file before proceeding with clearing a configuration.
- The Device ID for any device that is part of an active system will display any number other than ZERO. When a configuration has been cleared, the Device ID for all devices should be a ZERO, which means it is not a part of an active system.

The screenshot shows the 'Device Maintenance' window. It contains two tables: 'System List' and 'Device List'. The 'System List' table has columns for System ID, System Description, Device Count, Audio, and Status. The 'Device List' table has columns for Serial Number, Host Name, Device ID, Device Description, System ID, System Description, Audio, and Status. The 'Clear Configuration...' button is highlighted in red in the right-hand sidebar.

System ID	System Description	Device Count	Audio	Status
	All Devices	1	N/A	●
05478365	Test File	1	On	●

Serial Number	Host Name	Device ID	Device Description	System ID	System Description	Audio	Status
05478365	TesiraForTeX05478365	1		05478365	Test File	On	●

CHANGING NETWORK SETTINGS

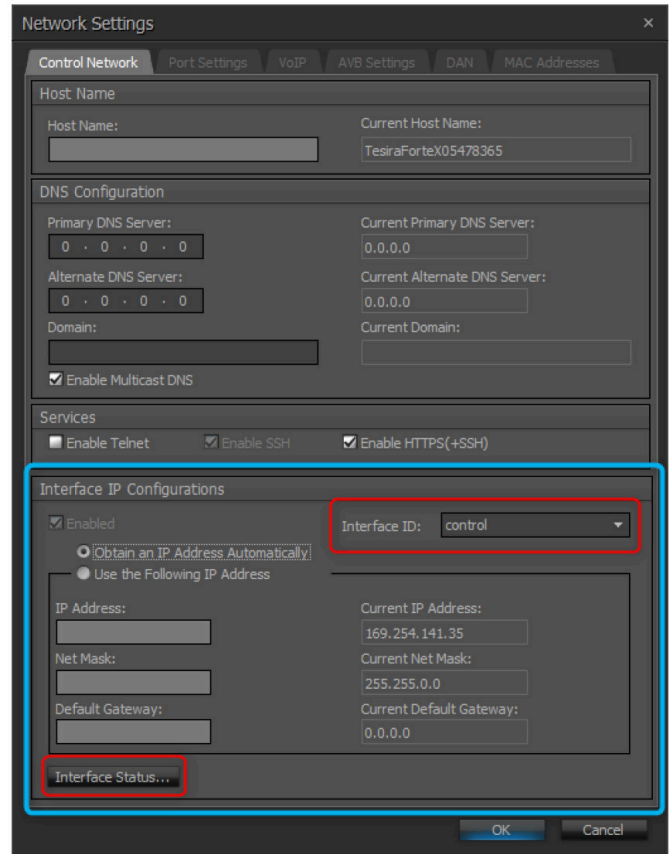
Biamp Tesira server class devices (TesiraForte, Tesira Server and Server IO) have multiple potential network connections. To make changes to these, navigate to **Device Maintenance**. Once you have selected the system and the device for which you would like to adjust **network settings**, click the Network Settings button.

NOTES:

- Obtain an **IP Address Automatically** sets the Network Interface to receive a DHCP address. If there is not a DHCP address, the IP will resolve as a Link Local address in the 169.254.x.x range.
- Using the Use the **Following IP Address** option will allow you to set a static IP address.

CHANGING CONTROL NETWORK IP ADDRESS:

On the **Control Network** tab select **Interface ID:** Control. This allows you to change the Control IP address.

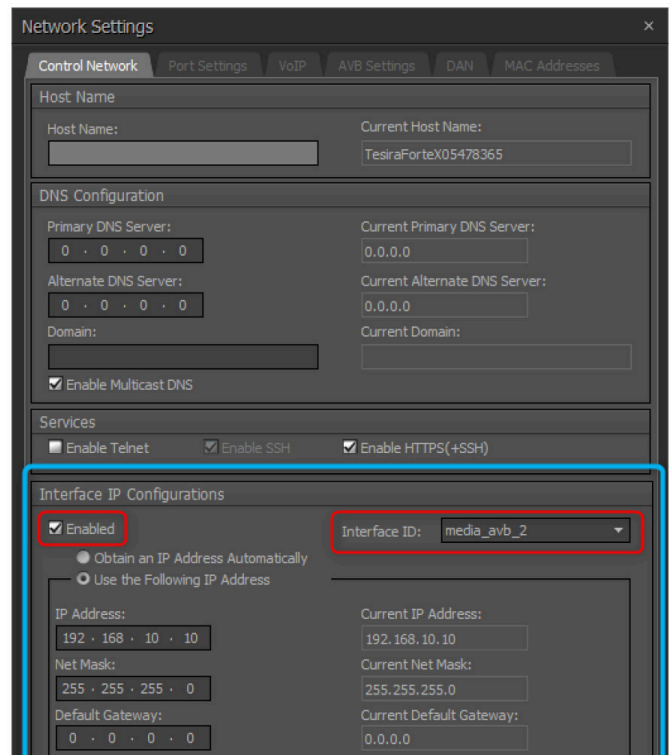


CHANGING OR ENABLING / DISABLING AVB IP ADDRESS:

Changing the AVB IP Address is very similar to the Control IP Address. Select the **Interface ID:** **media_avb_2** to target the AVB interface. To assign an IP address to the AVB interface, you must first select the check box for **Enabled**, which allows an IP address to be assigned for control traffic to pass over the AVB port.

NOTES:

- Depending on network(s) topology you may not need to enable the AVB IP address. See below links to our Cornerstone Knowledge Base to learn more about network topology options.
- [Separated or Converged Control and AVB Networks](#)
- [Single Cable Mode](#)

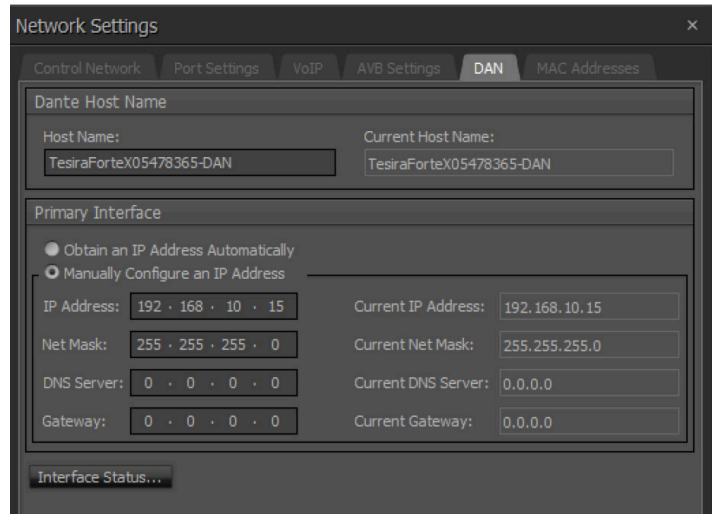


CHANGING DANTE IP ADDRESS:

Changing the IP address of the Dante Interface is done in similar fashion, but in a different tab. Navigate to the **DAN** Tab in the device's **Network Settings**.

NOTES:

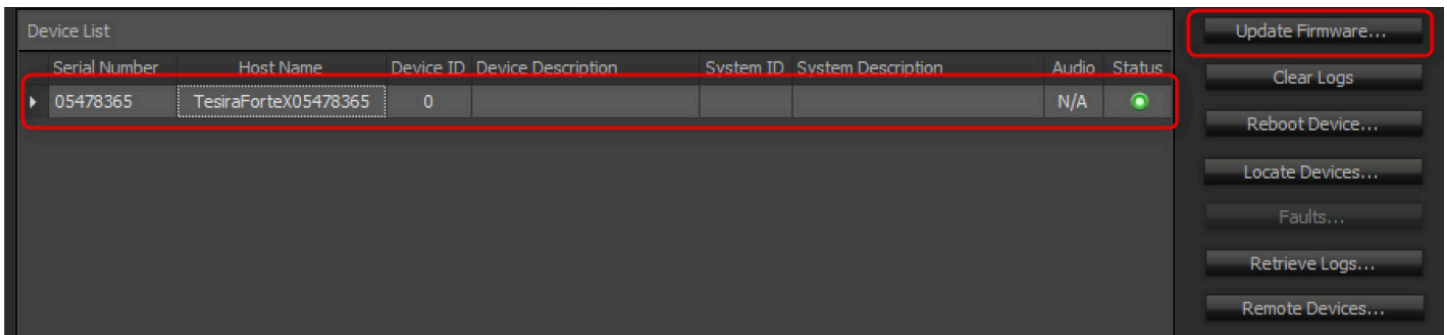
To change a device's Dante IP Address, the device cannot be running a configuration. Follow this guide's instructions for **Clearing a Configuration**.



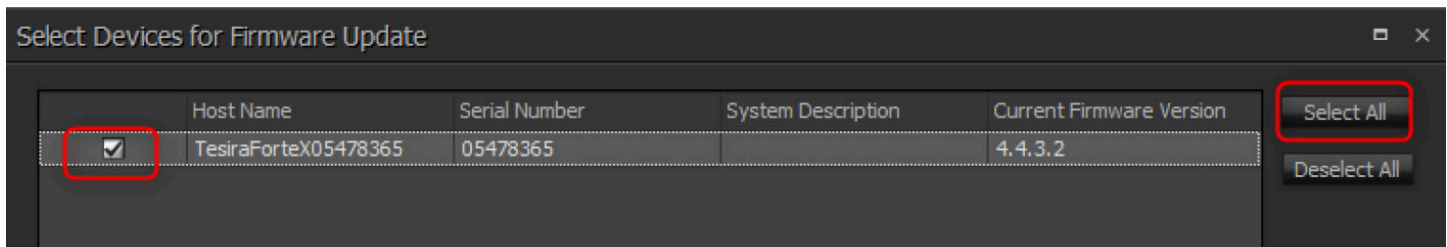
UPDATING FIRMWARE

To update a device's firmware, open **Device Maintenance**.

Once in **Device Maintenance**, select the system from the **System List** and/or device from the **Device List** and click **Update Firmware...** on the right side of the window.



You will be prompted to select the firmware file you wish to upload via a file explorer pop-up. Navigate to the appropriate **.tfa2** and click **Open**. All devices that are eligible to receive an update will appear in a new window. Check the box by the unit(s) listed or choose **Select All** and then click **OK** to begin the FW update.



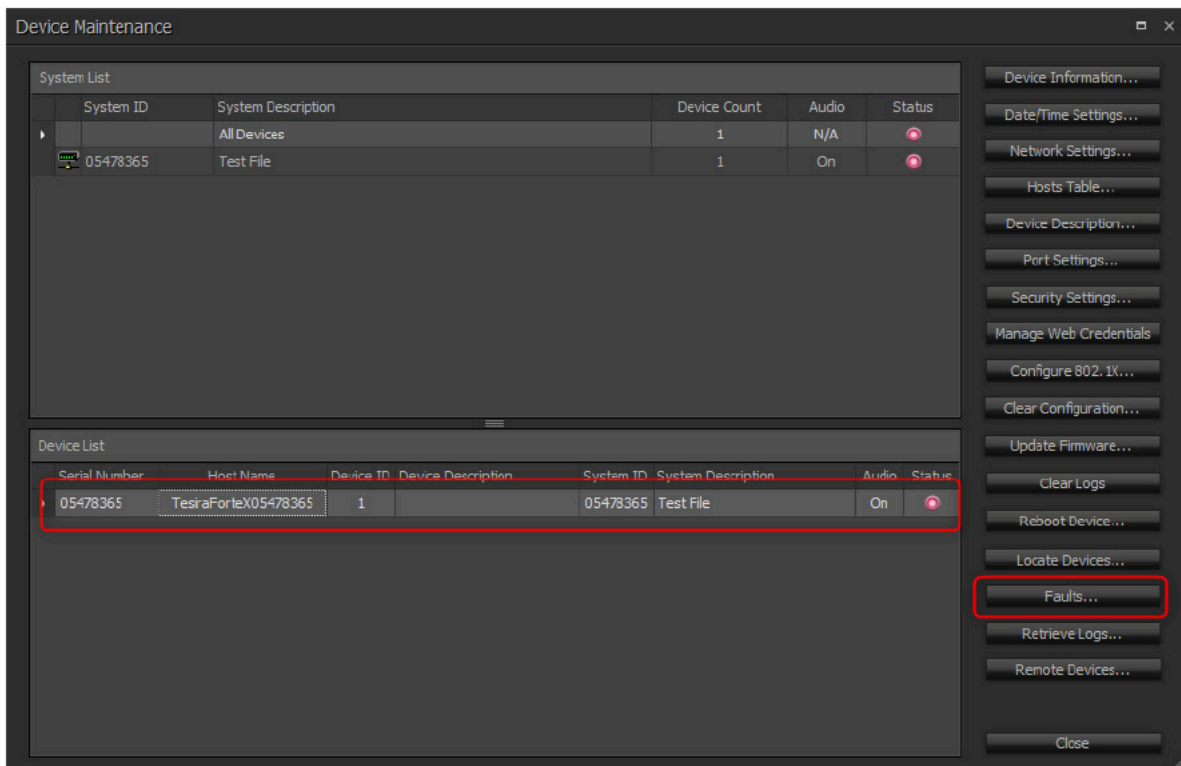
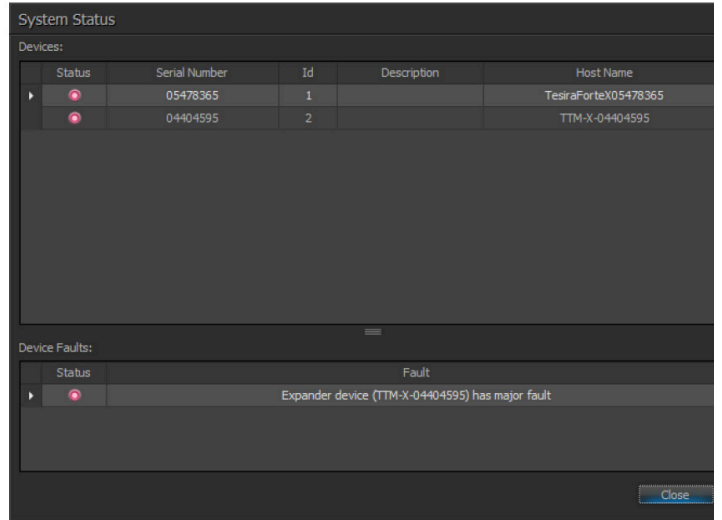
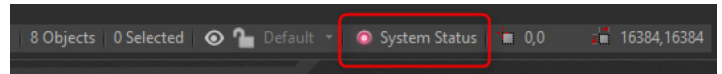
NOTES:

The most current FW can always be found on our website at www.biamp.com or in our [Cornerstone Knowledge Base](#).

CHECKING FAULT STATUS IN TESIRA

There are multiple ways to view fault status of a Tesira system. The first is when you are connected to the system. In the bottom right corner of the Tesira software, you will see the **System Status** button. Clicking this will open a window with all devices in the system and their fault status.

The second method is through **Device Maintenance**. Select the device in the **Device List** and click the button on the right for **Faults...**



PULLING LOGS FROM A TESIRA SYSTEM

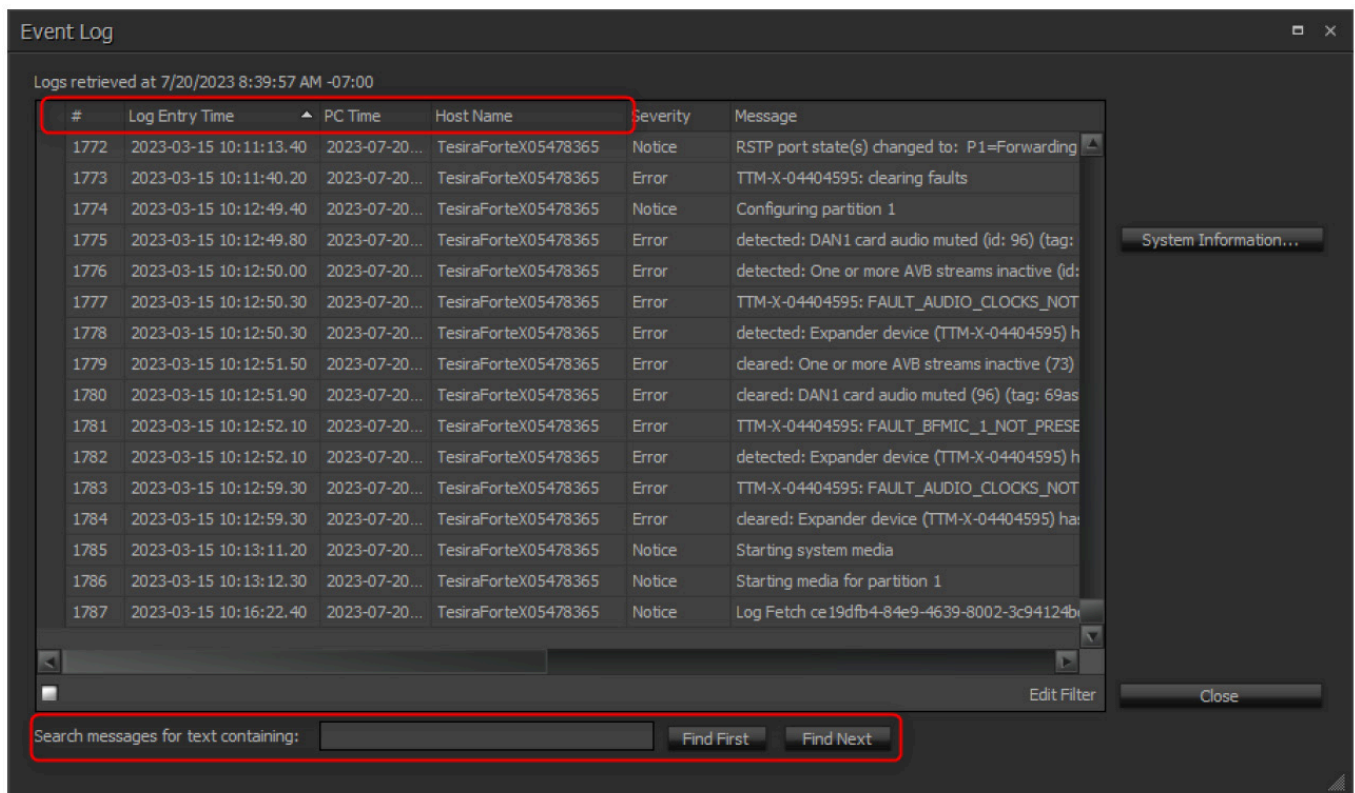
Tesira log files contain a lot of useful information and may be critical to identifying and solving a particular problem. Most likely if you contact our support team, they will request to review log files.

To pull logs from a specific device, open **Device Maintenance** and select the device in the **Device List**. On the right side select **Retrieve Logs...**

This prompts you to save the logs. Be sure to save them in a location that is easy to access or where you would like them stored permanently.

After the logs have been saved, an **Event Log** will appear showing a text version of the log files so you can review them without having to open the files.

You can sort by oldest or newest by clicking the column headers at the top, or you can search the text for something specific.



ADJUSTING THE EQUIPMENT TABLE

The **Equipment Table** is how we allocate physical hardware to be a part of a system.

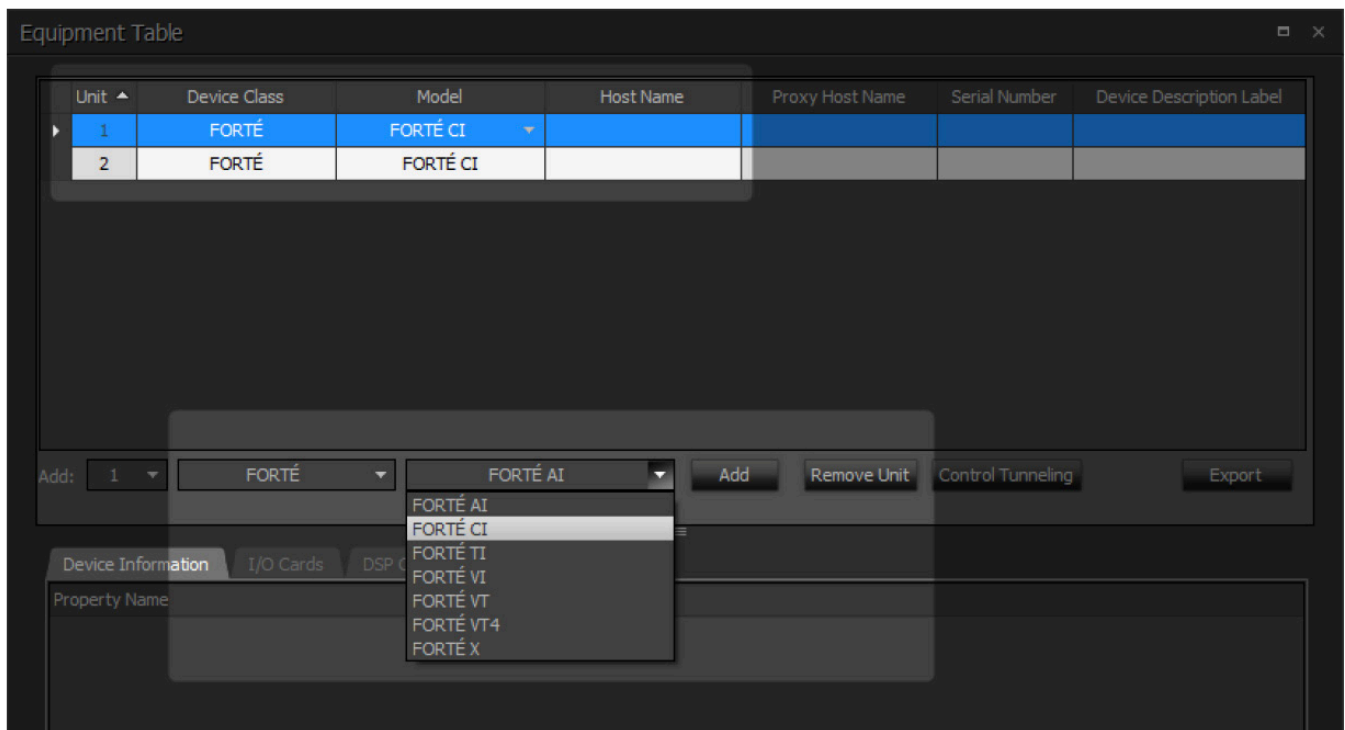
To open the **Equipment Table**, go to **System -> Equipment Table**.

Device Class - Shows whether it is a TesiraFORTE, SERVER, Remote Expander, etc.

Model - Shows the specific model of device we are allocating.

Host Name - Points the unit listed to a physical device on the network.

Unit - Gives each unit a specific ID number for compilation.



COMPILING AND SENDING A TESIRA FILE

Compiling the Tesira file is required before a file can be sent to a device. To compile your Tesira file, navigate to **System -> Compilation**.

You will be presented with multiple options, with the most common being:

Compile Active Partition - Compiles the partition that is currently selected in the file.

Compile All Uncompiled Partitions - Partitions in the file that have not been compiled, will be compiled.

Recompile All Partitions - Compiles all partitions, whether compiled or not.

To send a Tesira configuration that has been compiled go to **System -> Network -> Send Configuration**.

ALLOCATING BLOCKS TO A SPECIFIC UNIT

For systems with multiple DSPs or expanders, there are tools to prevent the compiler from allocating a block to the incorrect unit. These functions are called **Allocated to Unit** and **Fixed-In Unit**.

Allocated to Unit - Allows you to select the block, and allocate to a specific unit listed in the equipment table. The unit number, which corresponds to the same unit number in the equipment table, will appear in the block's upper left corner.

Fixed-In Unit - Locks the selected allocation to prevent the compiler from overriding your selection. If the compiler does not find a possible routing solution for the signal flow, errors may occur.

To access the functions, right click on a selected block, go to **Properties -> DSP Properties Tab**. First, select the unit to which you wish to allocate, and then set **Fixed-In Unit** to **True**. Now when the file is compiled it will force the signal path to the allocated units.

STARTING AND STOPPING SYSTEM/PARTITION AUDIO

To allow audio to pass through a system, Tesira functions on two levels, **System Audio** and **Partition Audio**. This enables complete control over the audio passing through the system. When a file is sent, you are prompted to **Start System Audio** and to **Start Partition Audio**.

If you need to start/stop audio after these prompts you can navigate to **System -> Start or Stop System Audio** or **Manage Partition Audio**.

NOTES:

If the meters in your file are stuck at -100, make sure **System Audio** or **Partition Audio** is started.

SETTING TESIRA CLOCK MASTER

Tesira can combine and synchronize with multiple network audio protocols such as AVB, Dante, and Cobranet. You can select which clock will be the master clock inside of Tesira software by navigating to **System -> Media Network -> Setup...**

In the dialog, select the box for the desired **Clock Master**. To make this change to a previously configured system, recompile all partitions and send the configuration to apply this change.

FACTORY RESET (PINHOLE RESET, PHR)

Tesira DSPs, most expanders, and amplifiers have an official reset procedure. When using the Pin Hole Reset process (PHR) you restore the DSP back to its factory default setting. This will remove any statically assigned IP address, Host Name will be the default, and the configuration file will be cleared from system memory. Be sure to document and back-up all necessary information before proceeding to reset the device.

Reset procedure is similar across all devices, but pinhole locations differ.

Refer to the Cornerstone Knowledge Base for more on [How to Reset a Tesira Device to Factory Defaults](#).

FORTE X EXCLUSIVE: PORT MODES

Exclusive to the Forte X is the option of switching the port modes, which provides flexibility in how the ports are used for various applications. By default, the Forte X is configured for Dedicated Control and Media.

To change the **Port Mode**, navigate to Device Maintenance, select the Forte X, and go to Network Settings. Under the Port Settings tab, you will see the list of available options to choose from.

Choose from the following list of port modes.

It is recommended that only P1 (Control) be connected while reconfiguring the port mode.

Once the port mode has been changed, the device should be rebooted to ensure the change takes place.

For more information see our Cornerstone Knowledge Base: [Forte X Network Port Modes](#)

Ports	Dedicated Control and Media	Dedicated Control, VoIP, and Media	Converged Control, VoIP and Media
P1	Control/VoIP	Control	Control/VoIP/AVB/Dante
P2	AVB/Dante	VoIP	Control/VoIP/AVB/Dante
P3	AVB/Dante	AVB/Dante	Control/VoIP/AVB/Dante
P4	AVB/Dante	AVB/Dante	Control/VoIP/AVB/Dante
P5	AVB/Dante	AVB/Dante	Control/VoIP/AVB/Dante

Tesira Helpful Tips

MANUAL DISCOVERY

Tesira by default uses an **Auto Discovery** method using **UDP** broadcast.

For a more reliable connection there is an option for **Manual Discovery** by adding an IP address using **TCP**.

To do this, navigate to **Tools -> Options -> Application Settings -> Network -> Device Discovery -> Device List**.

In the **Device Discovery** dialog, click **Add**, and enter the **IP address** or **Host Name**. Add a **Description** to make the **IP** or **Host Name** more identifiable. Click **OK** to save the addition.

NOTES:

For more information see our Cornerstone [Knowledge Base: Tesira Device Discovery Methods](#)

USING SIGNAL PATH IDENTIFIER

A very useful tool for following signals through a Tesira configuration is the **Signal Path Identifier**, which is accessible by right clicking any line in Tesira and selecting **Signal Path Identifier**. There are different options from which to select:

Signal Path Identifier - Provides the signal flow trace from input(s) to output(s) of the currently selected line. When you click off the selected line, the identified red outline will disappear.

Persistent Signal Path Identifier (Normal Mode)

- Behaves similarly to **Signal Path Identifier** but will remain regardless of where in the file you click. Additionally, you can click on other lines and quickly jump between signal flows. This is recommended for troubleshooting to verify the correct signal path.

Persistent Signal Path Identifier (Locked Mode)

- The selected signal path will remain regardless of where you click, even if you click on another line in the file.

PREVENTING THE COMPILER FROM ADJUSTING EQUIPMENT TABLE

The section about Allocated to Unit and Fixed-In Unit is one way to prevent the compiler from changing how blocks are compiled. Additionally, if the compiler can't find a solution, it can automatically add devices to the equipment table. If you are working with the parameters of set equipment list, you can disable the option for the compiler to add devices.

Navigate to **Tools -> Options -> Application Settings -> Compile -> Deselect "Add Devices"**. This prevents the compiler from being able to add devices to a system or change the type of DSP.

ADDING DISCONTINUED DEVICE TO THE EQUIPMENT TABLE

Some Tesira devices, while still function and updateable, are considered discontinued. This applies to the TesiraFORTE VI and TI models. If you need to include them in your file but cannot find them listed as an option in the equipment table, simply enable Use **Discontinued Devices**.

Navigate to **Tools -> Options -> Application Settings -> Compile - Select "Use Discontinued Devices"**.

PROCEDURE FOR SETTING STATIC IP ADDRESSES IN TESIRA

When assigning Static IP addresses, it is important to start with your AVB expanders, amplifiers and control devices and work back to your server class devices to prevent devices from not being discoverable after the changes are made.

Follow these steps for applying statics IP addresses:

1. Connect all devices to the appropriate switch for discovery. Default IP address is always set to DHCP and will pull a local address of 169.254.xxx.xxx if no DHCP server present.
2. Begin with assigning the static IP addresses for all expanders, amplifiers, and control devices. These will no longer be visible after the change has been made, but that will be remedied in the next step.
3. Once all of the edge devices are changed, proceed to changing your server class devices to their appropriate IP address.

See previous section on **CHANGING NETWORK SETTINGS** for more information on how to statically assign an IP address.

Tesira Common Faults and Troubleshooting Tips

FAULT: PORT IS NOT 802.1AS CAPABLE

When you see the **Port is not 802.1as capable** fault, this generally means that the port on the switch to which the device is connected is not compliant with IEEE 802.1as, which is the protocol for PTP when using AVB/TSN.

Common fixes:

1. Check to make sure the switch you are connected to is an AVB capable switch. Biamp has recommendations for [AVB switches](#), and suggests to use only switches that have been tested and approved by Biamp.
2. Ensure the appropriate license has been applied to the switch and the proper port configurations are followed.
3. If any changes are made to the switch, a reboot of the device to reset communication may be required.

If the fault is still present, please contact our Tech Support team.

FAULT: CLOCKS NOT SYNCHRONIZED ON...

This fault is an indication that the Tesira device is unable to synchronize its clock with the selected Clock Leader.

For AVB - If you see this fault, try rebooting the DSPs in your system. This will re-initiate the pilot stream that sets up the clock, and communication between talker/listener.

For Dante - The only method of resolution is to investigate the Preferred Leader in Audinate's Dante Controller software. Check the logs for continual changes in the Preferred Leader status. Common resolution is to change the Preferred Leader to a more stable device on the network that is continually powered on to prevent the clock election process from constantly recurring.

DAN-1 Card is Muted is a common fault that we see accompany the unsynchronized clocks. This is a feature of the DAN-1 cards, that when a clock election process occurs, the card will mute itself. If this fault is persistent, remove the Dante uplink from the server class device and reboot the unit. Once fully powered on, connect the cable.

If issues persist, please contact our Tech Support team for additional help.

FAULT: UNABLE TO COMMUNICATE WITH CARD IN SLOT (13) OR (1)

On a TesiraFORTE card slot 1 is the AVB card and on a Server/Server IO card slot 13 is the AVB Card. There are two reasons this could happen:

1. Most commonly the card slot in question has been inundated with network traffic (potentially a broadcast storm), causing the card to shut down to protect itself and the host processor. The fix is to **Remove the network connection -> Reboot the Device -> Make sure fault has cleared -> reestablish the connection.**
2. Rarely, but in some cases, it could be an issue with the card itself. With Server/Server IO, you can open the unit and re-seat the card to verify. A reboot of the device may be required to clear the fault.

If the issue persists, please contact our Tech Support team.

FAULT: INCONSISTENT DEVICE

This fault may be mysterious, but the cause can sometimes be quite simple.

1. **Mismatch of SW/FW** - If the software is newer than the firmware of the unit you are trying to send a configuration, there may be something newer in the configuration that the unit does not recognize. When you load the file, it may report inconsistent device.
Resolution - Clear Configuration from afflicted unit(s) -> Update FW to match Software version - Resend file.
2. **Disruption of Network** - Networks can be imperfect sometimes, and a single packet not making it to its destination could make the configuration unreadable.
Resolution - Simplify the network connection as much as possible by bypassing any switches (connect directly to control port of unit if necessary).

We do not recommend sending a configuration over a WiFi connection. If repeated attempts over WiFi yield the same results, establish a hard-line connection to the network.

Additionally, this can sometimes be caused by something in the file itself. This is much more difficult to track down, so we recommend contacting the Tech Support team for further assistance.